

ENSCOPE

A QUANTA SERVICES COMPANY



ELECTRICAL SERVICES

ENERGY INFRASTRUCTURE

Management, engineering & commissioning services

COMPANY OVERVIEW

Enscope provides project management, engineering, procurement, construction and commissioning services in support of energy infrastructure developments.

Building on Enscope's strong performance in the delivery of Completions and Commissioning Services we have built a TECHNICIAN-FOCUSED trades team to support our offerings.

Enscope's Electrical team is made up of experienced Construction Managers, E&I Superintendents and Supervisors, Leading Hands and Technicians - both Electrical and Mechanical and all experienced personnel in delivering works as part of a broader project or discrete packages of work.

To facilitate these services Enscope has established Electrical Contractor's Licences in Western

Australia, Victoria, Queensland, South Australia and the Northern Territory.

Enscope's team can be mobilised on short notice and can be self-sufficient in terms of tooling and consumables when mobilised with our dedicated Commissioning Tooling Containers and Fully Insulated/Air-Conditioned Instrument Container.

Our personnel are experienced in both the Construction and Commissioning of Gas Processing Facilities, Gas Pipelines, Compressor Stations, Gas Storage, and Petrochemical facilities.



LEGAL ENTITY

Enscope Pty Ltd

TRADING AS

Enscope

ABN

38 136 478 030

ACN

136 478 030

HEAD OFFICE

Level 1, 1 Cambridge Street
West Leederville WA 6007

POSTAL ADDRESS

7/50 Oxford Close
West Leederville WA 6007

COMPANY CONTACT

+61 (8) 6229 6500
info@enscope.com.au
www.enscope.com.au

CONTACT PERSON

Jason Grubb
Electrical Services Manager
+61 422 859 071
jgr@enscope.com.au

ELECTRICAL CONTRACTOR LICENCE NUMBERS

WA: EC13819
SA: PGE296095
VIC: REC-32613
NSW: 388477C
QLD: 86362
NT: C3970



OUR VALUES

At the foundation of our business is Enscope's culture and our core values. These are part of our Mission Statement and are embedded in the way we speak and the way we act. They are demonstrated in how we go about our business and our decision-making processes in relation to safety, environment, quality and productivity in striving for best for project outcomes.

Our mission is to be our customers' preferred choice for mid-sized gas and energy infrastructure project delivery.

We will achieve this through applying our values in everything we do:

- ✓ Act with **integrity**;
- ✓ Be accessible and **accountable**;
- ✓ Apply **innovation** to continually improve; and
- ✓ Promoting a culture of **inclusivity** and **safety** in all our work.

Key to achieving our mission is understanding our customers' interests, adding value and delivering on our commitments.

We will pursue opportunities to challenge our team to grow and expand our capabilities.





BEST FOR PROJECT

We support our clients to efficiently develop and deliver energy infrastructure opportunities.

At Enscope, we strive to proactively understand and define the objectives, constraints and success factors for each project.

We objectively assess the project's key drivers and adopt a 'best for project' approach to help our clients and partners achieve an efficient and effective outcome.

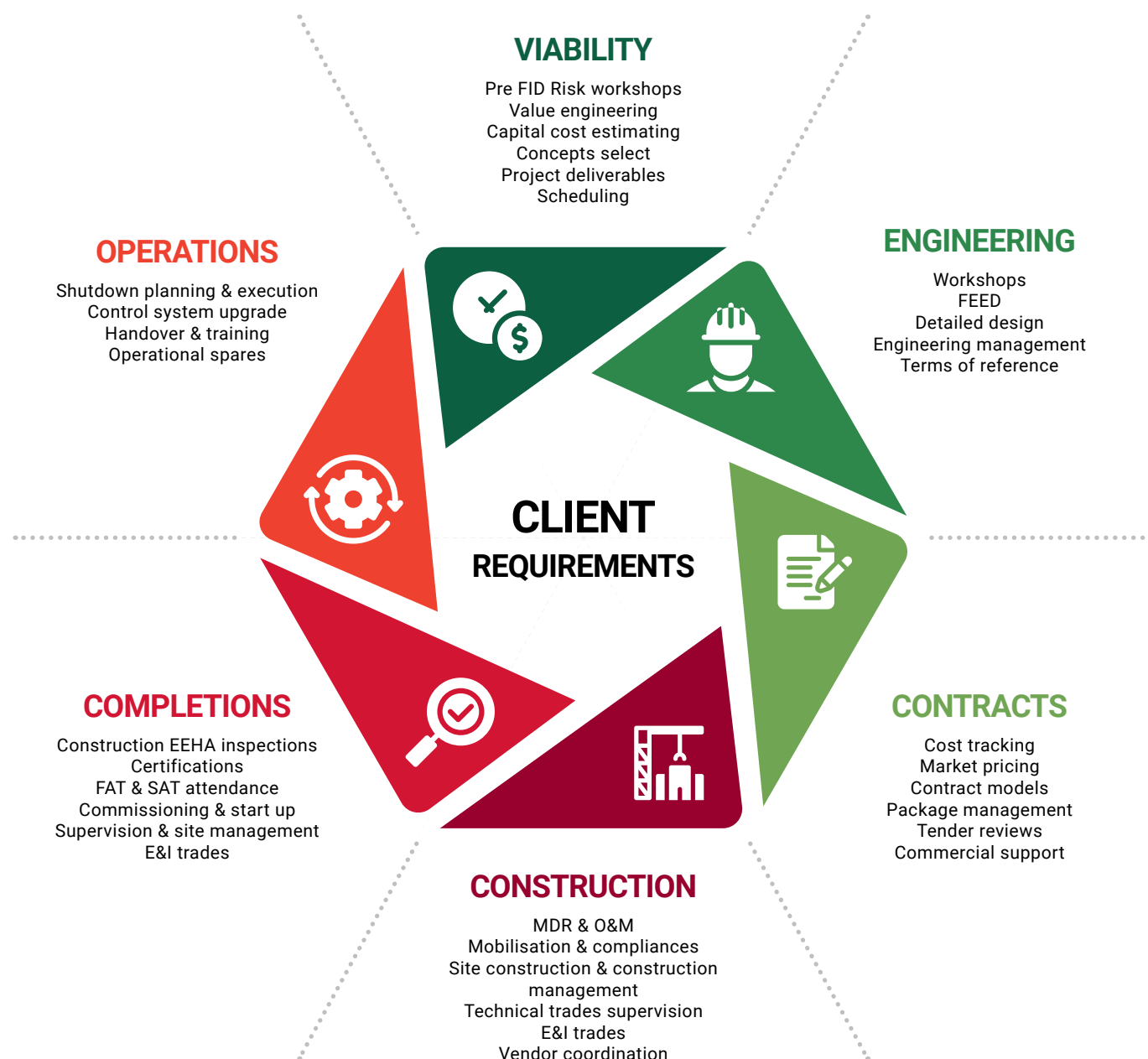
As this is always our fundamental approach, our key personnel naturally possess a wealth of experience in the delivery of energy infrastructure projects. In addition to our core EPCM, EPC and D&C services we can successfully deliver results as part of a construction contractors team or as part of the Owner's project team.

Our ethos is embodied by a team of problem solvers who work hard and who are motivated to deliver solutions. We maintain an effective, agile and proactive approach for the benefit of the project.

Through the involvement of Enscope, our clients are able to directly benefit from our experience. This leads to reliable outcomes and efficient management of project delivery risk.

OUR SKILLS

We are adept at achieving successful commercial and technical outcomes through application of our core skills comprising: project definition, project management and execution, engineering and targeted problem solving.





ELECTRICAL TEAM

Execution & Construction

- Project management
- Project life cycle scheduling & planning
- Site management & supervision
- Constructability & safety risk assessments
- Plans, procedures, work packs & JHAS / safe work method statements
- Self delivery of electrical & instrumentation work
- Earthing & cathodic protection
- Installation of underground conduit & pit systems
- Power & control / instrument cabling installation & termination
- Installation of cable support systems
- Instrument & associated instrument tube installation
- Chemical injection tubing installation
- Installation of fire & gas detection & suppression equipment
- Pre-installation calibrations & inspections
- Hazardous area device installation & inspection
- Quality assurance & quality control
- Compilation of hazardous area dossiers
- Construction documentation & records: MDR; ITPS; FICS; ITRS; material certificates
- As-built documentation
- Construction hand over packs
- Provision of tooling & equipment

Completions & Commissioning

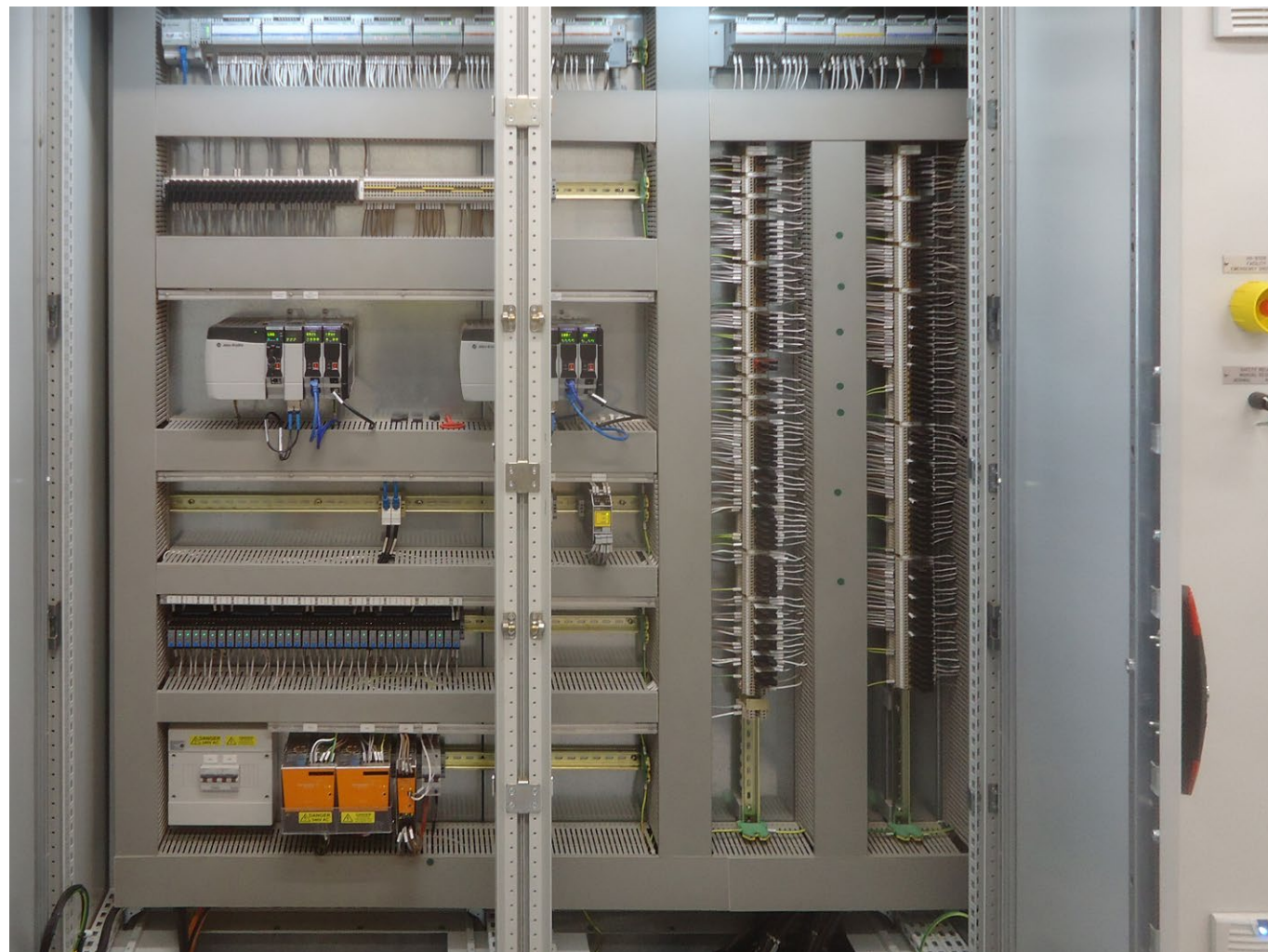
- Commissioning planning & preparation: pre-commissioning & commissioning procedures
- Inspection of construction records / hand over packs
- Pre-commissioning & commissioning readiness
- Cold & hot loop testing
- Instrument calibration verification
- Energisation & function testing
- Administration of online completion management systems
- Hazardous area dossier compilation & reviews
- Cause & effect testing
- Safety system implementation & commissioning
- HV switching plans & operation
- Vendor FAT & SAT attendance & coordination
- Systems handover & final punchlisting
- On-site commissioning management & engineering to complete pre-commissioning
- Commissioning & performance testing
- Compilation & handover of final commissioning records & commissioning dossier
- Provision of ongoing trades support to operations teams
- Procurement of tooling & test equipment
- Provision of tooling & equipment

ASSOCIATE MEMBERSHIPS



CONTROL SYSTEMS

In-house design and manufacturing of bespoke control system package including detailed design, hardware selection and supply, control panel assembly, software development and programming, factory testing and site testing.



Key Offerings

- Control system engineering and integration
- Project life cycle scheduling & planning
- Control panel design and build
- Control system design and programming
- SCADA system design and configuration
- Remote Telemetry Communications
- Functional safety life cycle management and solutions
- Gas custody transfer metering consultancy

Control System Platforms

- Rockwell Control Logix / Micro Logix
- Siemens S7-400s / S7-1500 / S7-1200
- Schneider M580 / M380 / SCADAPack
- RTU / Triconnex
- GE RX3i
- ABB Flow X
- Emerson Controlwave Micro
- Honeywell RTU2020 / Control Edge



HSEQ

Enscope is committed to the health and safety of our employees, customers, contractors and the communities in which we operate. Our core philosophy is that safety takes precedence in all business pursuits and work practices. Our HSEQ management capabilities provide confidence and flexibility for our Clients.

We are experienced in delivering E&I services, including as the site Principal Contractor when required, utilising Enscope’s Health, Safety, Environment and Quality Management System which have been certified to ISO 45001:2018, ISO 14001:2015 and ISO 9001:2015.

Our Safe Control of Work Systems include robust Permit to Work and Isolation & Lock-Out Tag-Out systems which are managed by our experienced Plant Permit Authorities. If the preferred approach is for Enscope to operate under our clients’ HSEQ systems we also have a strong track record in doing so.

Enscope’s in-house HSEQ resources work proactively with the Client and Sub-contractors to ensure a high level of HSEQ support and alignment throughout the Project.

Katnook Gas Processing Facility



Construction & Commissioning

SCOPE OF WORK

Enscope	44,491
HSE SYSTEMS UTILISED	HOURS WORKED

Zero MTI or LTI
LTIFR = 0.00 TRIFR = 0.00
HSE PERFORMANCE

Kwinana Powdered Leach Nickel Sulphate Project



Construction Completions & Commissioning

SCOPE OF WORK

Client	44,171
HSE SYSTEMS UTILISED	HOURS WORKED

Zero First Aid, MTI or LTI
LTIFR = 0.00 TRIFR = 0.00
HSE PERFORMANCE

Talinga Orana Gas Gathering Station



Commissioning & Principal Contractor (for this phase)

SCOPE OF WORK

Enscope	45,742
HSE SYSTEMS UTILISED	HOURS WORKED

Zero First Aid, MTI or LTI
LTIFR = 0.00 TRIFR = 0.00
HSE PERFORMANCE

Waitsia Stage 1 Expansion Project



Construction & Commissioning

SCOPE OF WORK

Enscope	39,918
HSE SYSTEMS UTILISED	HOURS WORKED

Zero MTI or LTI
LTIFR = 0.00 TRIFR = 0.00
HSE PERFORMANCE

Northern Gas Pipeline



Commissioning

SCOPE OF WORK

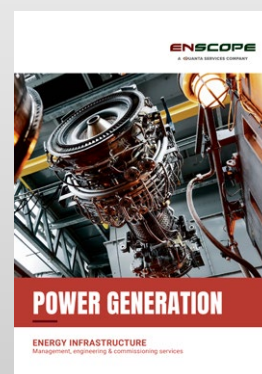
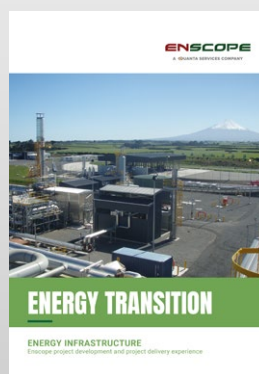
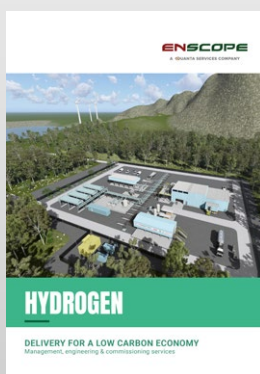
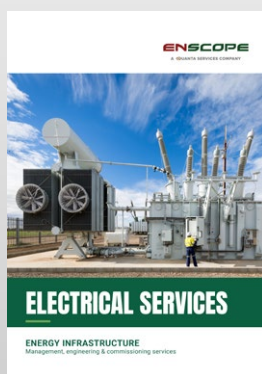
Enscope	40,792
HSE SYSTEMS UTILISED	HOURS WORKED

Zero MTI or LTI
LTIFR = 0.00 TRIFR = 0.00
HSE PERFORMANCE



ENSCOPE

A QUANTA SERVICES COMPANY



PERTH

Level 1, 1 Cambridge St
West Leederville WA 6007

DARWIN

80 Mitchell St
Darwin City NT 0800

MELBOURNE

Level 1, 599 Doncaster Rd
Doncaster VIC 3108

BRISBANE

Suite 4A, 201 Leichhardt St
Spring Hill QLD 4000

+61 (8) 6229 6500 /// info@enscope.com.au

Scan/click on the QR Code to view our capability statements, or visit

ENSCOPE.COM.AU

